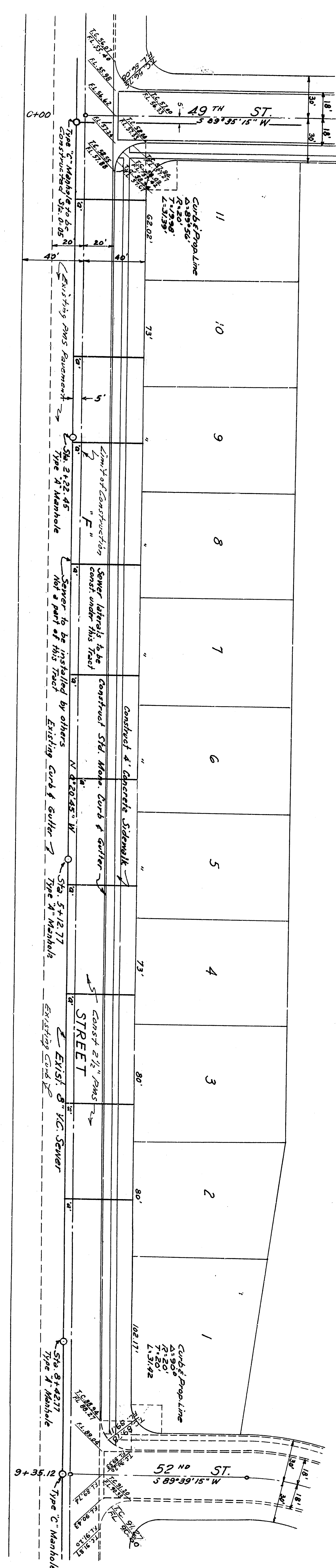
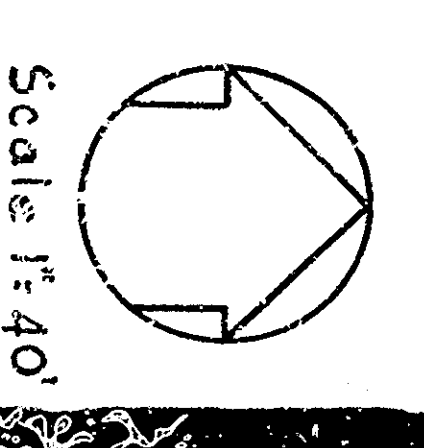
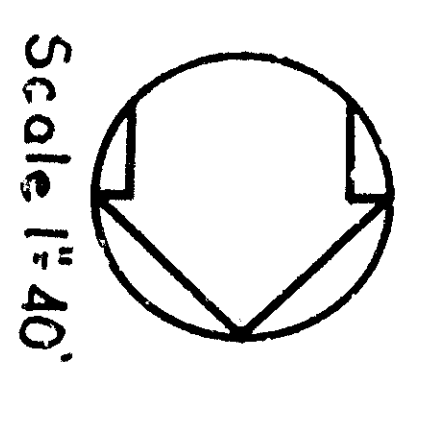
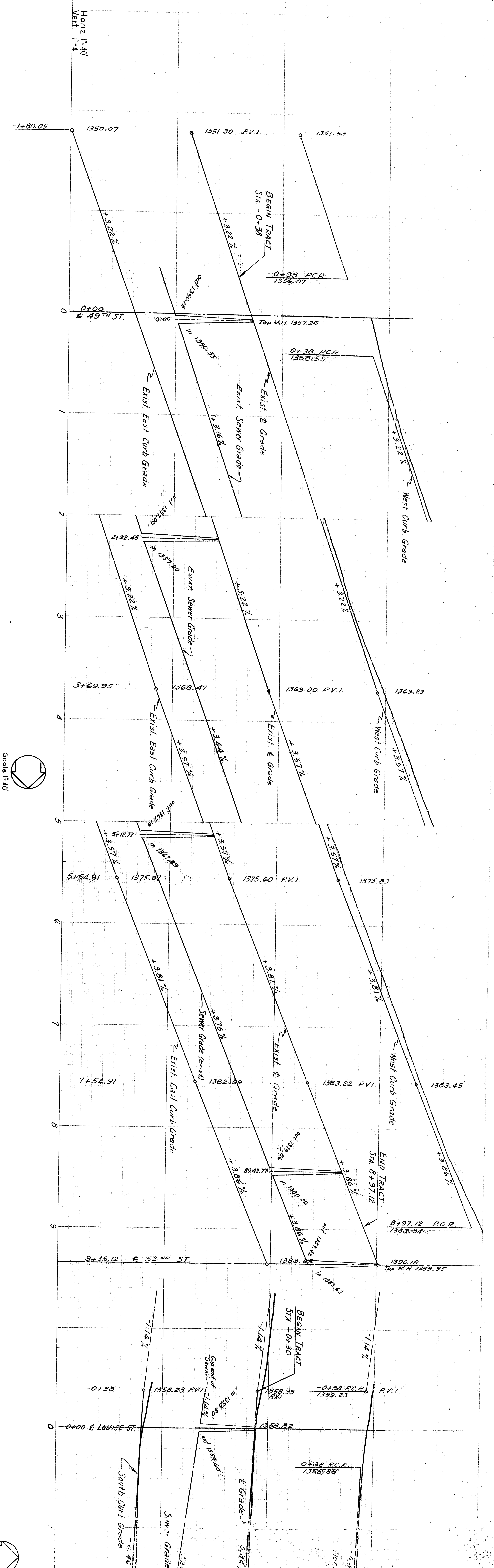


CROSS SECTION DRAWING 2321-D TYPE 40B
SIDEWALK LOCATION AS INDICATED ON PLAN

CROSS SECTION DRAWING 2321-D TYPE 40B
SIDEWALK LOCATION AS INDICATED ON PLAN

49th STREET

- Notes:
1. All work shall be in accordance with the specifications for the project.
 2. All work shall be in accordance with the specifications for the project.
 3. All work shall be in accordance with the specifications for the project.
 4. All work shall be in accordance with the specifications for the project.
 5. All work shall be in accordance with the specifications for the project.
 6. All work shall be in accordance with the specifications for the project.
 7. All work shall be in accordance with the specifications for the project.
 8. All work shall be in accordance with the specifications for the project.
 9. All work shall be in accordance with the specifications for the project.
 10. All work shall be in accordance with the specifications for the project.

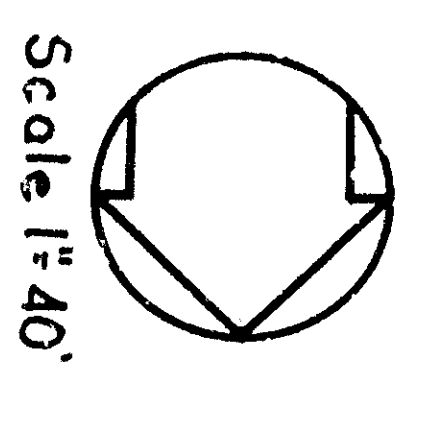
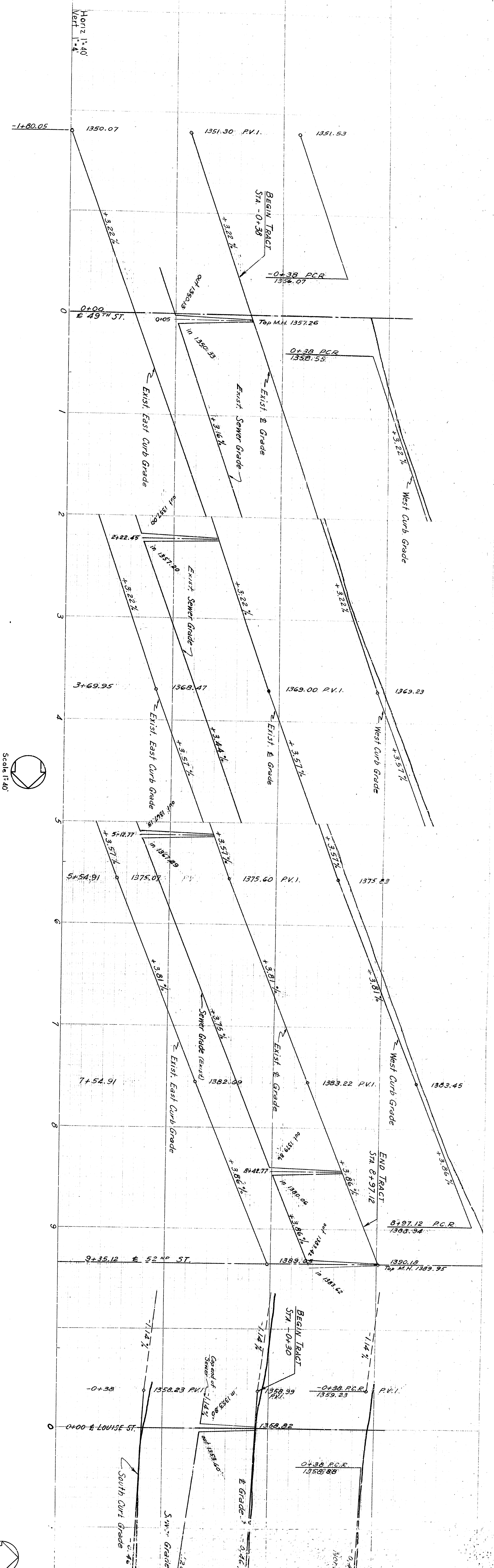


CROSS SECTION (7'-5 1/4")
CROSS SECTION DRAWING 2321-D TYPE 40B
SIDEWALK LOCATION AS INDICATED ON PLAN

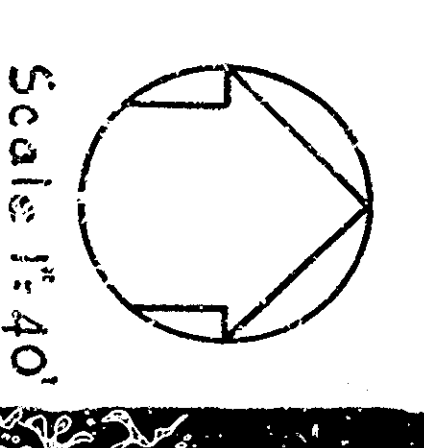
CROSS SECTION (9'-4 1/4")
CROSS SECTION DRAWING 2321-D TYPE 40B
SIDEWALK LOCATION AS INDICATED ON PLAN

49th STREET

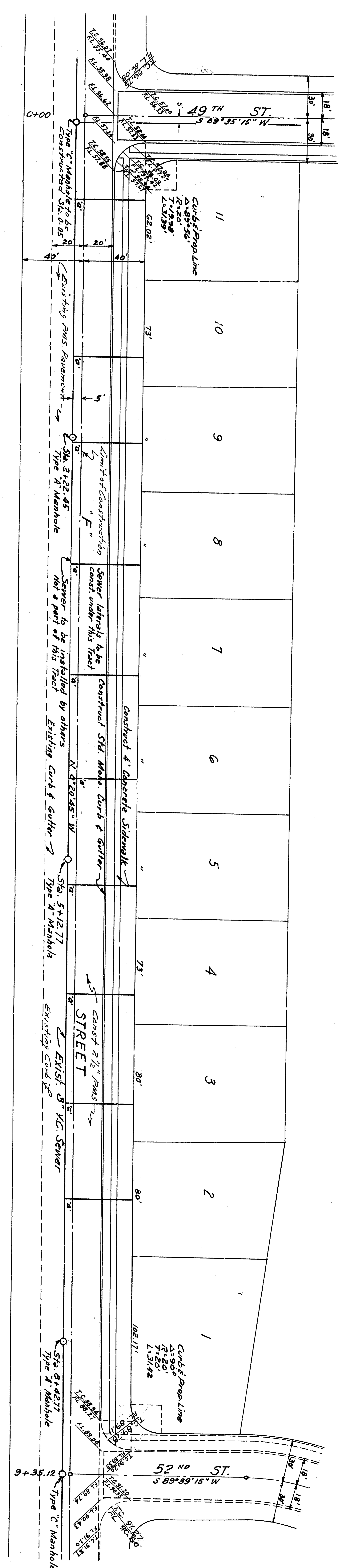
- Notes:
1. All work shall be in accordance with the specifications for the project.
 2. All work shall be in accordance with the specifications for the project.
 3. All work shall be in accordance with the specifications for the project.
 4. All work shall be in accordance with the specifications for the project.
 5. All work shall be in accordance with the specifications for the project.
 6. All work shall be in accordance with the specifications for the project.
 7. All work shall be in accordance with the specifications for the project.
 8. All work shall be in accordance with the specifications for the project.
 9. All work shall be in accordance with the specifications for the project.
 10. All work shall be in accordance with the specifications for the project.



Scale 1"=40'



Scale 1"=40'

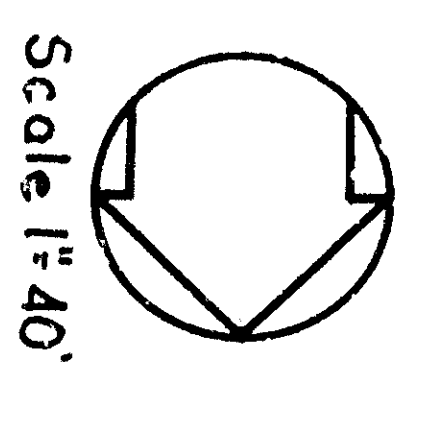
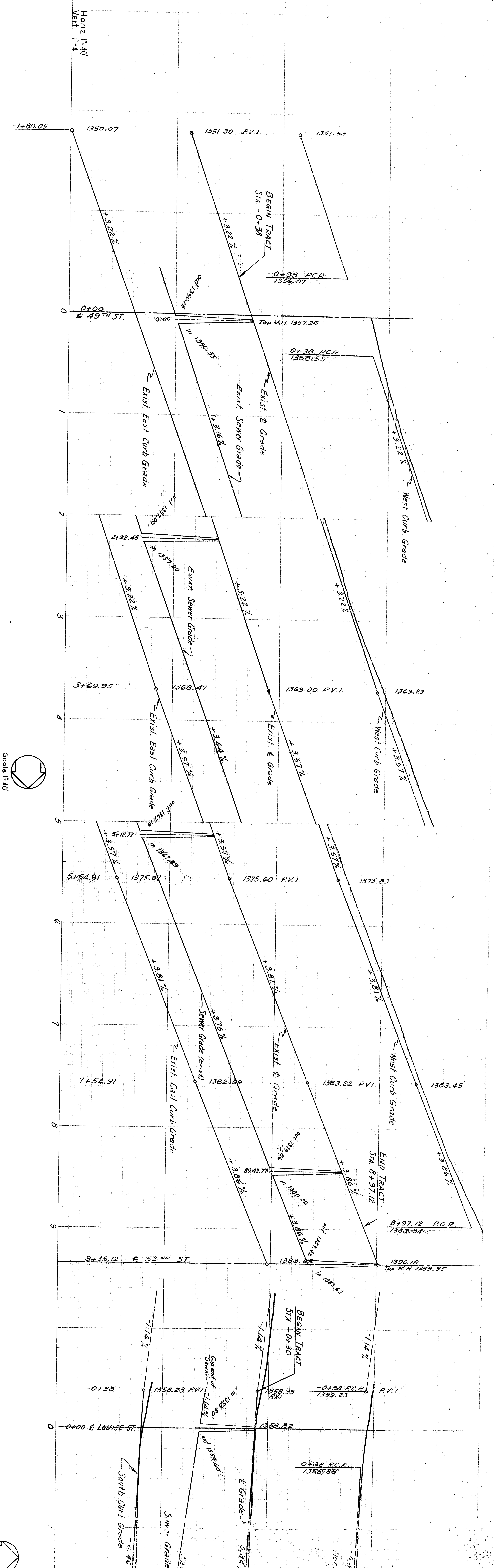


CROSS SECTION (7'-54")
CROSS SECTION DRAWING 2321-D TYPE 40B
SIDEWALK LOCATION AS INDICATED ON PLAN

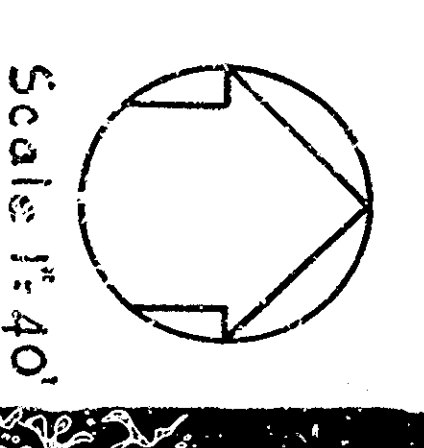
CROSS SECTION (7'-54")
CROSS SECTION DRAWING 2321-D TYPE 40B
SIDEWALK LOCATION AS INDICATED ON PLAN

49th STREET

- Notes:
1. All work shall be in accordance with the specifications for the project.
 2. All work shall be in accordance with the specifications for the project.
 3. All work shall be in accordance with the specifications for the project.
 4. All work shall be in accordance with the specifications for the project.
 5. All work shall be in accordance with the specifications for the project.
 6. All work shall be in accordance with the specifications for the project.
 7. All work shall be in accordance with the specifications for the project.
 8. All work shall be in accordance with the specifications for the project.
 9. All work shall be in accordance with the specifications for the project.
 10. All work shall be in accordance with the specifications for the project.

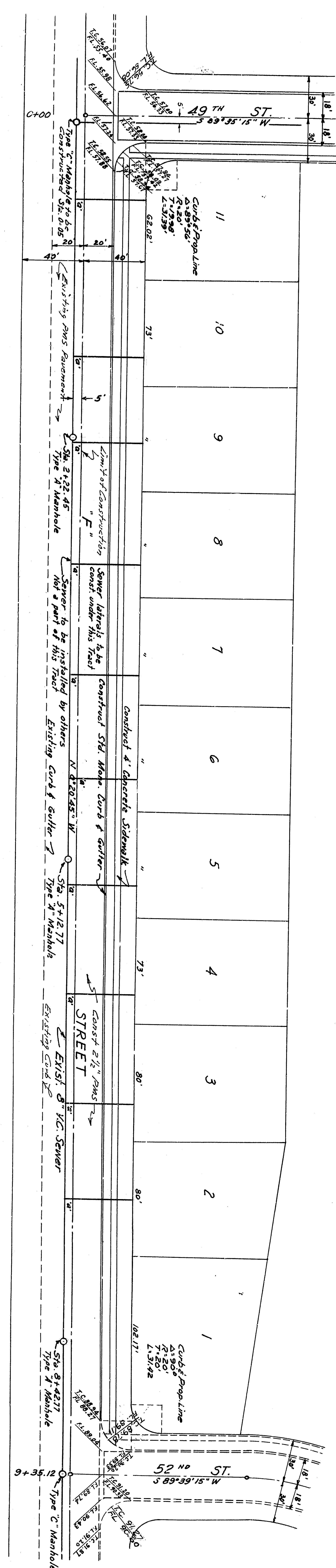


Scale 1"=40'



Scale 1"=40'

CROSS SECTION (7'-5 1/2")
 CROSS SECTION DRAWING 2321-D TYPE 40B
 SIDEWALK LOCATION AS INDICATED ON PLAN



CROSS SECTION (7'-5 1/2")
 CROSS SECTION DRAWING 2321-D TYPE 40B
 SIDEWALK LOCATION AS INDICATED ON PLAN

49th STREET

- Notes:
1. All work shall be in accordance with the specifications for 2008, 11/17/17, with appropriate amendments or specifications for 2017.
 2. 8" x 8" pipes with connecting frames to be constructed in 17'.
 3. All finished clay pipe manhole connections shall be cast in place and set in concrete.
 4. All manhole connections shall be constructed in place and set in concrete.
 5. All manhole connections shall be constructed in place and set in concrete.
 6. All manhole connections shall be constructed in place and set in concrete.
 7. All manhole connections shall be constructed in place and set in concrete.
 8. All manhole connections shall be constructed in place and set in concrete.
 9. All manhole connections shall be constructed in place and set in concrete.
 10. All manhole connections shall be constructed in place and set in concrete.
 11. All manhole connections shall be constructed in place and set in concrete.
 12. All manhole connections shall be constructed in place and set in concrete.